

2019 | euro
PCR

*Argentina and the Netherlands share their most educational cases:
focus on challenges and complications of left main PCI* With the
*collaboration of the Argentinian College of Interventional Cardioangiologists (CACI)
and the Working Group of Interventional Cardiology of the Netherlands (WIC)*

Stent displacement during the treatment of an ostial and ulcerated lesion in a short Left Main Coronary Artery

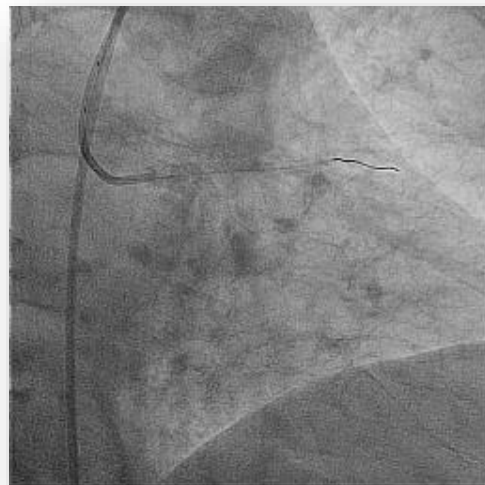
Alejandro Abel Fernández M.D.; F.S.C.A.I.
Clínica Bazterrica. Clínica Santa Isabel. Artery Group.
Buenos Aires, Argentina.

Artery Group

Speaker's name : Alejandro Abel Fernandez

I do not have any potential conflict of interest to declare

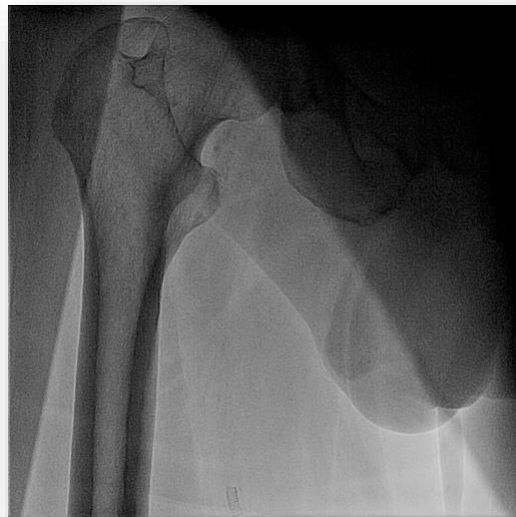
THE RESOLUTION



- Guide Catheter FL 3.5 7 F.
- DES (everolimus) 4.0 x 18 mm
- Proximal optimization NC 4.5 x 12 mm.



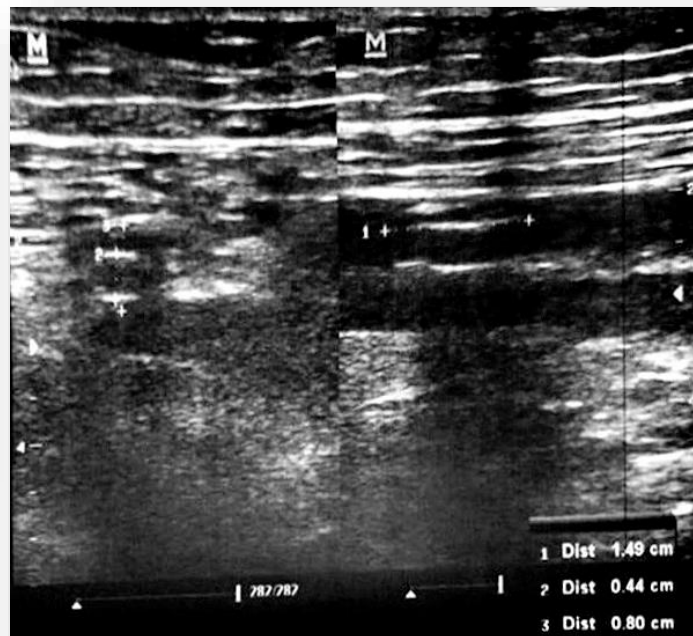
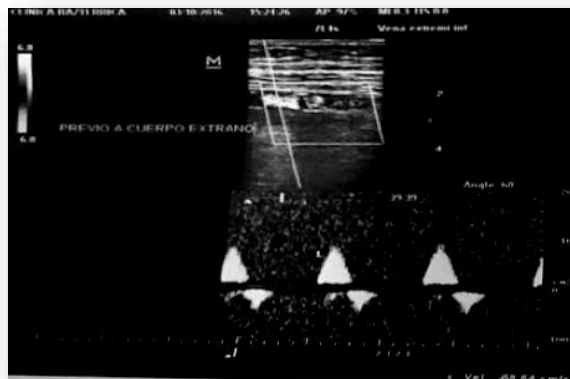
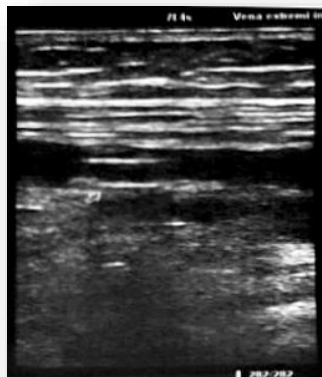
Before removing the sheath

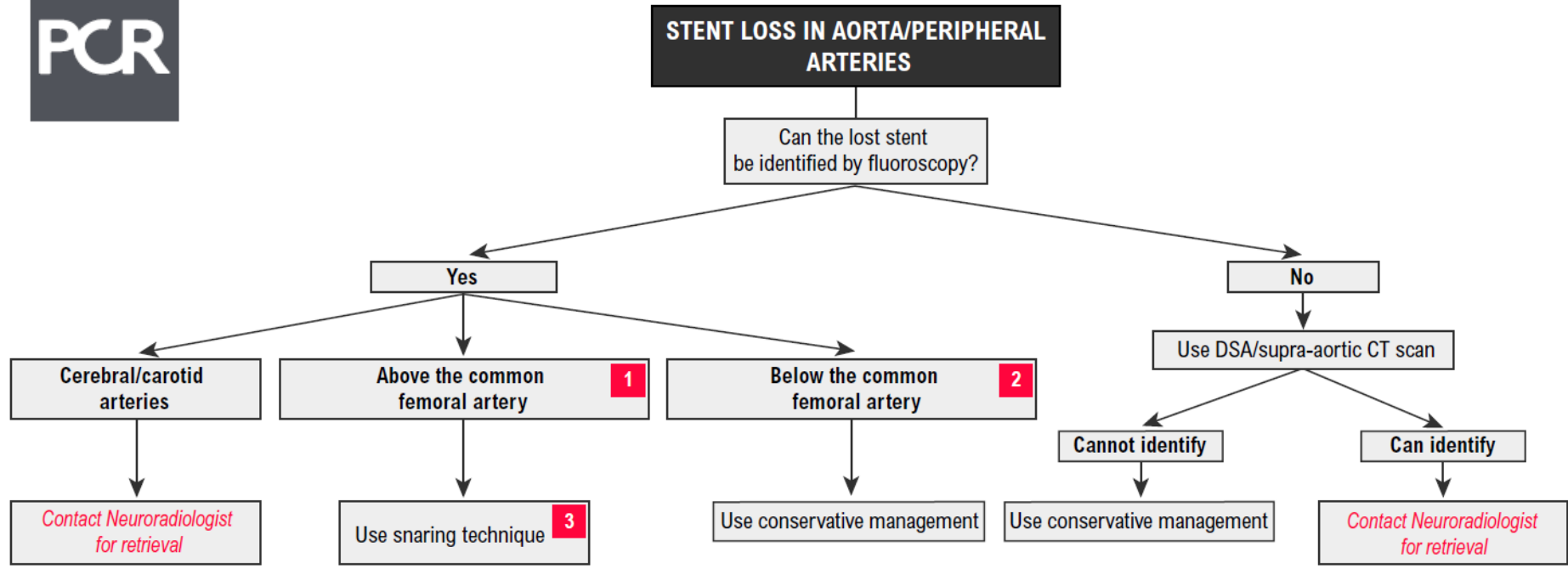


After removing the sheath



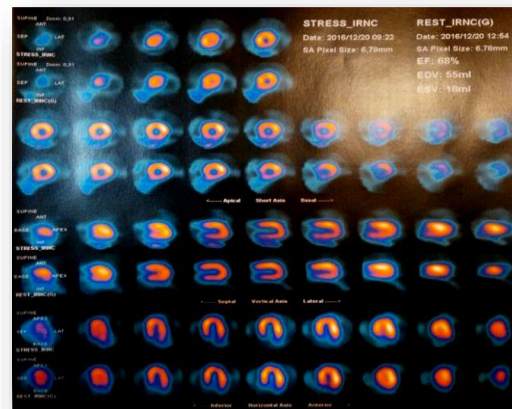
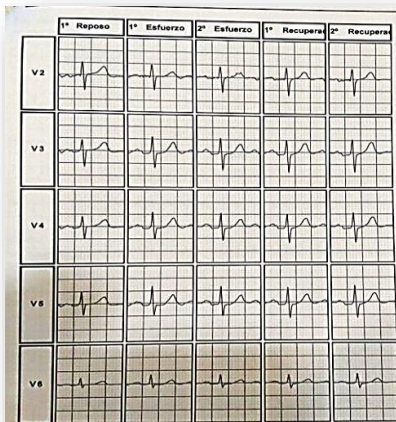
Doppler scan 30 days after





FOLLOW UP

- Asymptomatic
- Walking 5-7 km daily.
- SPECT: mild inferior defect. Less than 5 % of the total LV mass.



TAKE HOME MESSAGES

PROBLEM # 1:

- ✓ If the LMCA is short, do not be worried to implant a stent longer than the left main itself.
- ✓ Be specially careful when retrieving the wires and the guiding catheter.

PROBLEM # 2:

- ✓ **In certain specific situations, to leave a stent in a distal vessel might be an accepted strategy.**

THANK YOU VERY MUCH FOR YOUR ATTENTION