

# XXI Congreso Nacional CACI

## 1° Curso Internacional CACI - SCAI

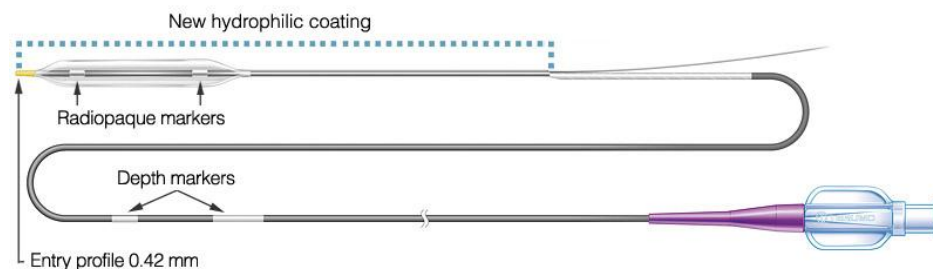
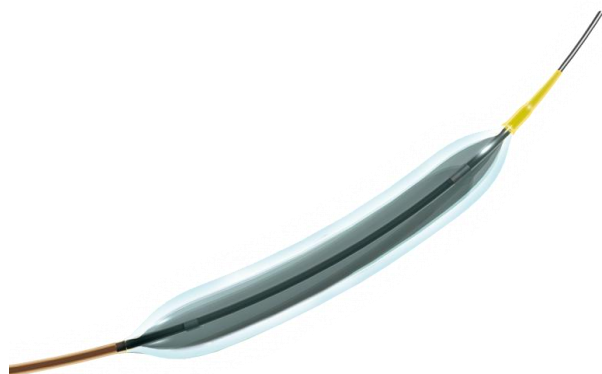
### Nuevos Productos

Mar del Plata 3 de diciembre de 2011

Natalia V. Machiavello

# Hiryu<sup>®</sup>

is a non compliant PTCA balloon catheter featuring high pressure resistance while maintaining crossability.



## Product Characteristics

Flexible tip, durable Hydrophilic coating and low entry profile 0.42 mm for crossability

High pressure resistance (RBP of 20 atm / 2026 kPa) and low compliance balloon offer precise dilatation force

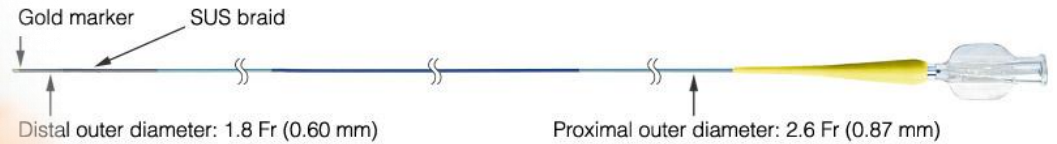
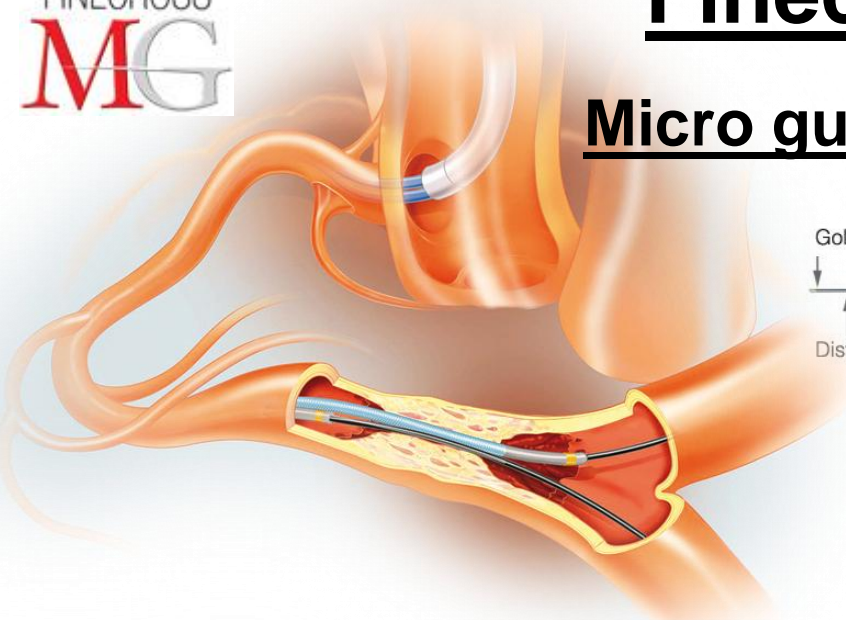
Complete range of balloon lengths (6-10-15-20 mm) and sizes (2.25-5.00 mm) to meet all clinical scenarios

## General Specifications

<b>Shaft diameter</b>	2.0 Fr (0.67 mm) Proximal 2.5 Fr (0.84 mm) Distal for 2.25 mm to 3.0 mm 2.6 Fr (0.87 mm) Distal for 3.25 mm to 5.0 mm
<b>Usable length</b>	145 cm
<b>Balloon marker</b>	Double
<b>Nominal pressure</b>	<b>10 atm (1013 kPa)</b>
<b>Rated burst pressure</b>	20 atm (2026 kPa) for 2.25 mm to 4.0 mm 18 atm (1824 kPa) for 4.5 and 5.0 mm
<b>Guide wire compatibility</b>	Maximum diameter 0.014" (0.36 mm)
<b>Lesion entry profile</b>	0.42 mm
<b>Coating</b>	Hydrophilic

# Finecross MG

## Micro guiding catheter



### Product Characteristics

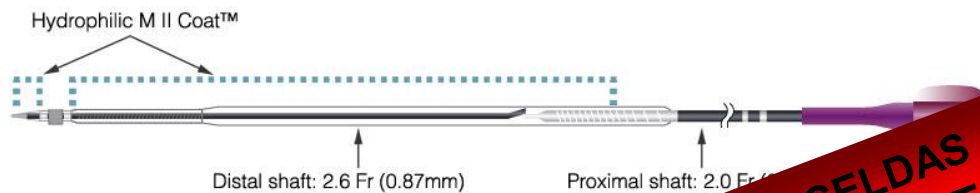
- Tapered inner and outer lumen provide an optimal balance between guide wire support and crossability
- Fully stainless steel braided shaft provides strong guide wire support
- PTFE coated inner layer facilitates manipulation of the guide wire
- 2.6 Fr (0.87 mm) proximal diameter enables buddy wire technique in 6 Fr (I.D.  $\geq$  0.070" - 1.78 mm) guiding catheter
- Large inner diameter ensures optimal guide wire handling

### General Specifications

<b>Distal outer diameter</b>	1.8 Fr (0.60 mm)
<b>Distal inner diameter</b>	0.018" (0.45 mm)
<b>Proximal outer diameter</b>	2.6 Fr (0.87 mm)
<b>Proximal inner diameter</b>	0.021" (0.55 mm)
<b>Guide wire compatibility</b>	Maximum diameter 0.014" (0.36 mm)
<b>Radiopaque marker</b>	0.7 mm gold single marker located at 0.7 mm from the tip
<b>Coating</b>	Hydrophilic

# KANAME

Homogenous cell geometry and thin struts provide stent flexibility and conformability to the vessel  
Low entry profile and the Ryuji<sup>®</sup> Plus shaft enhance lesion access  
Low compliant balloon for an optimal stent apposition



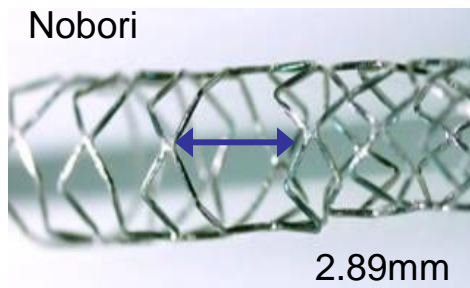
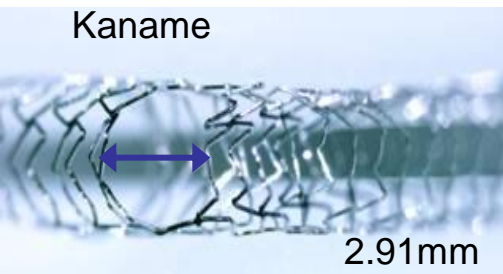
**EL DISEÑO DE LAS CELDAS ABIERTAS PERMITE UN EXCELENTE ACCESO A LESIONES ESPECIALMENTE BIFURCACIONES**

## General Specifications

### Available Sizes

Length: 9 - 12 - 15 - 18 - 24 - 28  
Diameter: 2.5 - 2.75 - 3.0 - 3.5 - 4.0

<b>Stent material</b>	Cobalt Chromium L605
<b>Guide wire diameter</b>	0.014" (0.36 mm)
<b>Balloon material</b>	Nylon elastomer
<b>Nominal pressure</b>	9 atm (911 kPa)
<b>Rated burst pressure</b>	16 atm (1621 kPa) for 2.5 to 3.0 mm 14 atm (1418 kPa) for 3.5 to 4.0 mm
<b>Stent crossing profile</b>	0.041" (1.04 mm) for 3.0 mm diameter
<b>Entry profile:</b>	0.017" (0.43mm)
<b>Usable length of catheter</b>	145 cm



# DC Bead

## Embolitic Drug Eluting Bead



DC Bead<sup>®</sup> are hydrogel-embolic, drug-eluting beads that are precisely calibrated. DC Bead<sup>®</sup>, made of polyvinyl alcohol, are biocompatible, hydrophilic and non-resorbable.

DC Bead<sup>®</sup> are intended to be loaded with doxorubicin for the purpose of:

- Embolisation of vessels supplying malignant hypervascularised tumour(s).
- Delivery of a local, controlled, sustained dose of doxorubicin to the tumour(s).

DC Bead<sup>®</sup> are intended to be loaded with irinotecan for the purpose of:

- Embolisation of vessels supplying malignant colorectal cancer metastasised to the liver (mCRC)
- Delivery of a local, controlled, sustained dose of irinotecan to the mCRC.

### Content of each vial

2 ml DC Bead + 8 ml of sterile physiological buffered saline

### Max. dose of drug to be loaded per vial

Doxorubicin: 75 mg OR  
Irinotecan: 100mg

### Product Characteristics

Preferred design: perfectly calibrated microspheres for a more targeted embolisation and effective and distal occlusion

Compressible for easy delivery

Color-coded cap for a direct selection of the right size

Able to load and release chemotherapy drugs in order to:

- Reduce drug systemic side-effects
- Increase the exposure of the tumour to the drug
- Provide a standardized procedure

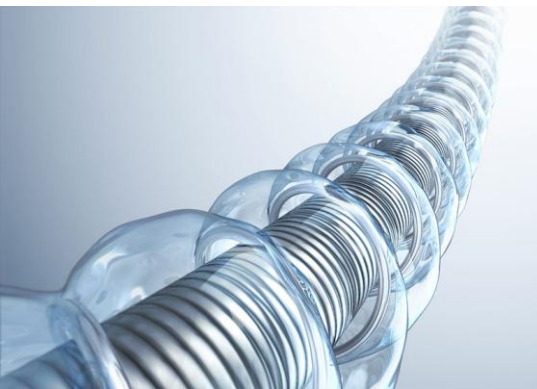
Catheter inner diameter compatibility	Diameter	Color code	Item reference
0.010" / 0.25 mm	100-300 µm	Yellow	DC2V103
0.014" / 0.36 mm	300-500 µm	Blue	DC2V305
0.021" / 0.53 mm	500-700 µm	Red	DC2V507



# AZUR<sup>®</sup>

peripheral HydroCoil<sup>®</sup> embolization system  
combines a platinum coil and an expandable hydrogel polymer.  
The hydrogel coating expands in the direction of **less resistance** to fill space when introduced into the bloodstream

General Specifications



## Product Characteristics

Expanding Hydrogel technology that delivers:

Permanent mechanical occlusion with less reliance on thrombus formation  
Improved volume filling, packing density, and occlusion efficacy

Mechanical stability

Increased delivery control and long-term durability

AZUR<sup>®</sup> detachable system:

First detachable system dedicated to peripheral use

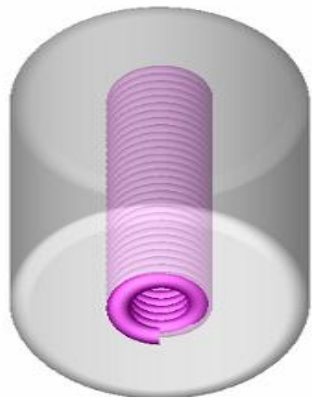
Can be retracted and repositioned , reducing the risk of migration

Detached in less than one second at the push of a button

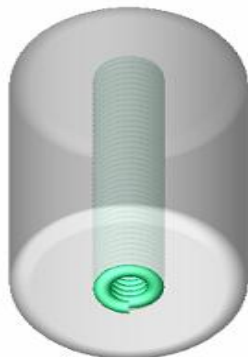


Coil type	Catheter / Microcatheter	Max length
AZUR <sup>®</sup> Detachable 18	0.021" (0.53 mm)	135 cm

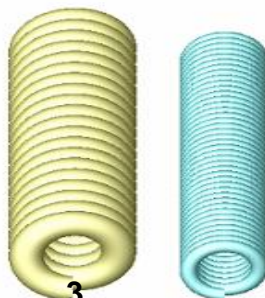
# 0.018" Detachable



AZUR 35



AZUR 18



3  
5      18

Platinum

Compared to similar length of bare platinum coils:

- AZUR 18  
~ x5 volume Platinum 18
- AZUR 35  
~ x4 volume of Platinum 35



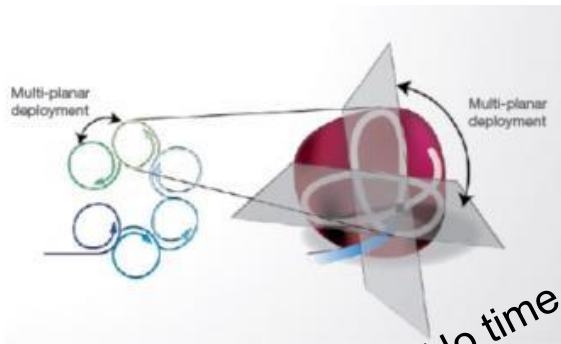
		Length (cm)				
		5	10	15	20	30
Loop diameter (mm)	3	X	X			
	4	X	X	X	X	
	6		X	X	X	
	8		X	X	X	
	10		X	X	X	
	12			X	X	
	15			X	X	X



## Framing Coil

AZUR® Framing coil is a platinum coil that offers a three-dimensional shape to cover the aneurysm wall or the inner lumen of an artery.

This coil is intended to give greater stability and safety in challenging situations such as wide neck aneurysm or high flow territories



No time restriction for repositioning

**0.018" Detachable**

		Length (cm)		
		20	26	34
Loop diameter (mm)	8	X		
	10		X	
	14			X
	20			X





# ¡Muchas Gracias!

Consultas técnicas:

[machiavello.natalia@gmail.com](mailto:machiavello.natalia@gmail.com)



**DISTRIBUTOR**  
Céspedes 3857 Bs. As., Argentina  
Conmutador: (54 11) 52 18 06 00  
E-mail: [tecmed@unifarma.com.ar](mailto:tecmed@unifarma.com.ar)  
[www.unifarma.com.ar](http://www.unifarma.com.ar)